

2024 Budget in Brief

City of Shawnee



Governing Body



MAYOR

Mickey Sandifer

msandifer@cityofshawnee.org

Ward I Councilmembers

Tony Gillette

tgillette@cityofshawnee.org

Sierra Whitted

swhitted@cityofshawnee.org

Ward II Councilmembers

Mike Kemmling

mkemmling@cityofshawnee.org

Jeanie Murphy

jmurphy@cityofshawnee.org

Ward III Councilmembers

Kurt Knappen

kknappens@cityofshawnee.org

Angela Stiens

astiens@cityofshawnee.org

Ward IV Councilmembers

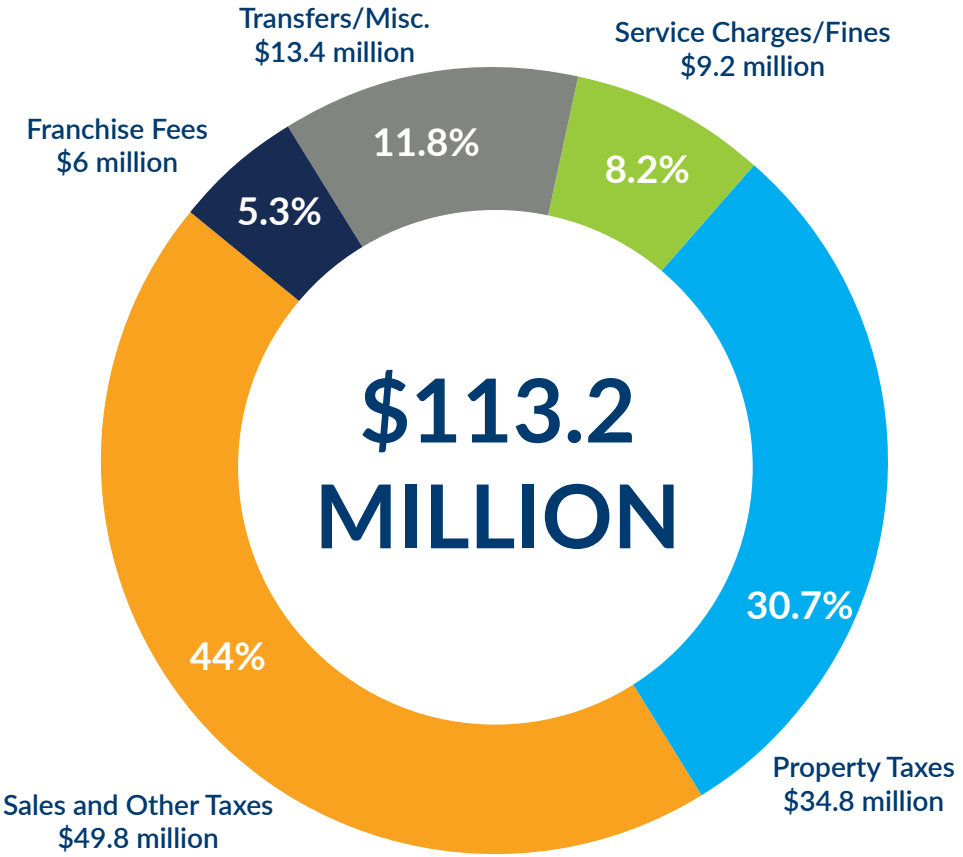
Jacklynn Walters

jwalters@cityofshawnee.org

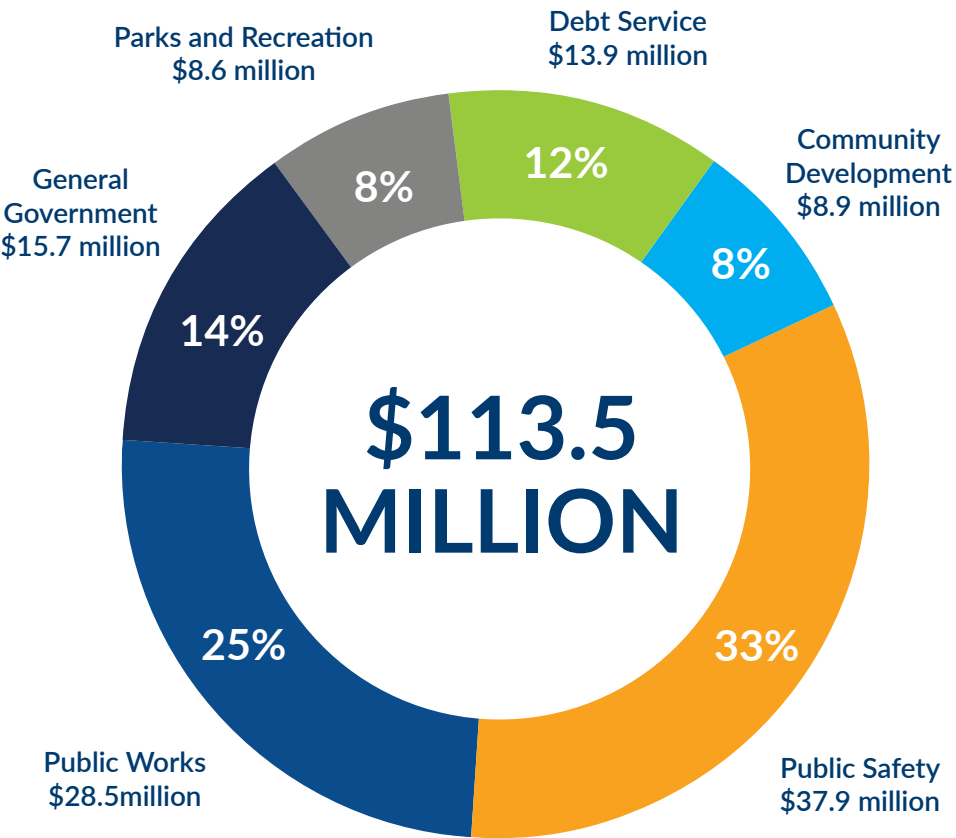
Laurel Burchfield

lburchfield@cityofshawnee.org

How the BUDGET is Funded



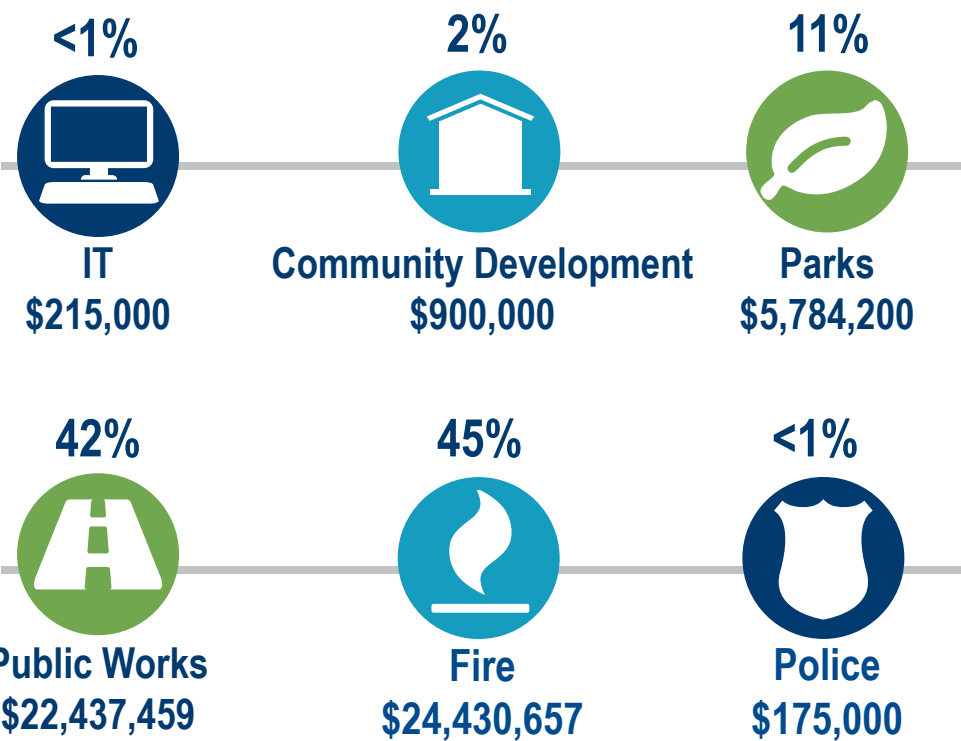
How Budget Dollars Are Spent



Budget 2024 HIGHLIGHTS

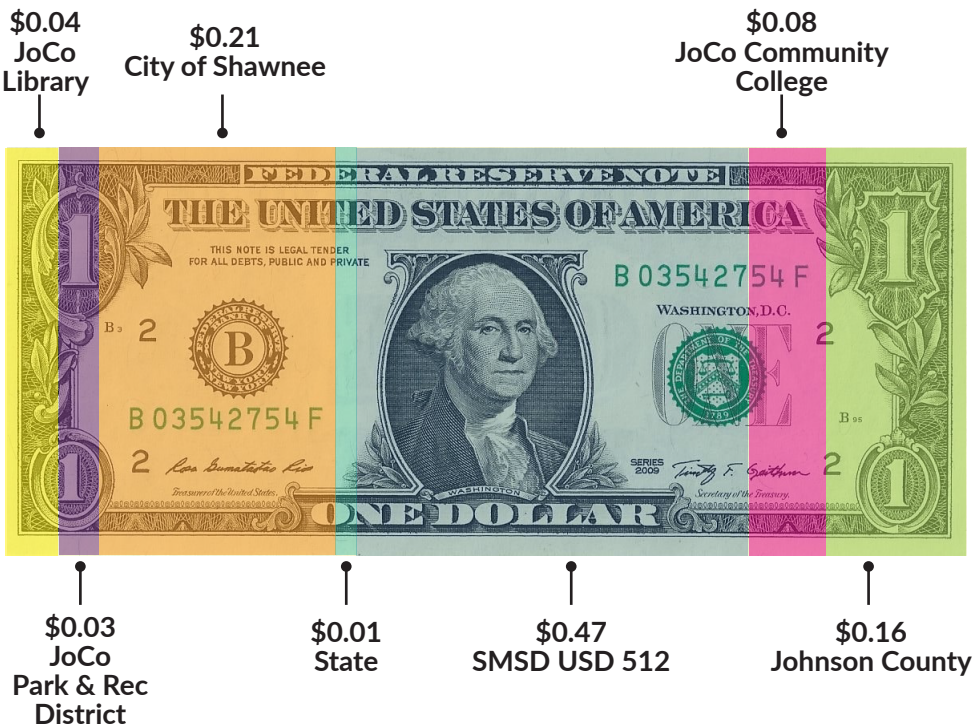
- **Mill Levy Reduction** - The Governing Body approved an estimated 1.0 mill levy reduction for the 2024 budget. The final assessed mill levy for 2023 property taxes decreased the mill to 23.048.
- **Parks & Pipes and Pavement** - Two special revenue funds had hit the 10-year sunset period and were up for renewal during the November 2023 election season. Both taxes passed with overwhelming support at the November 2023 election.
- **Fire Station 71 and 73 Remodel** - The CIP Budget includes facility upgrades for Fire Stations 71 and 73. The total cost for the entire project is \$26.3 million. Project Completion is expected in early fall of 2024

2024 Capital Improvement Overview



Your PROPERTY TAX

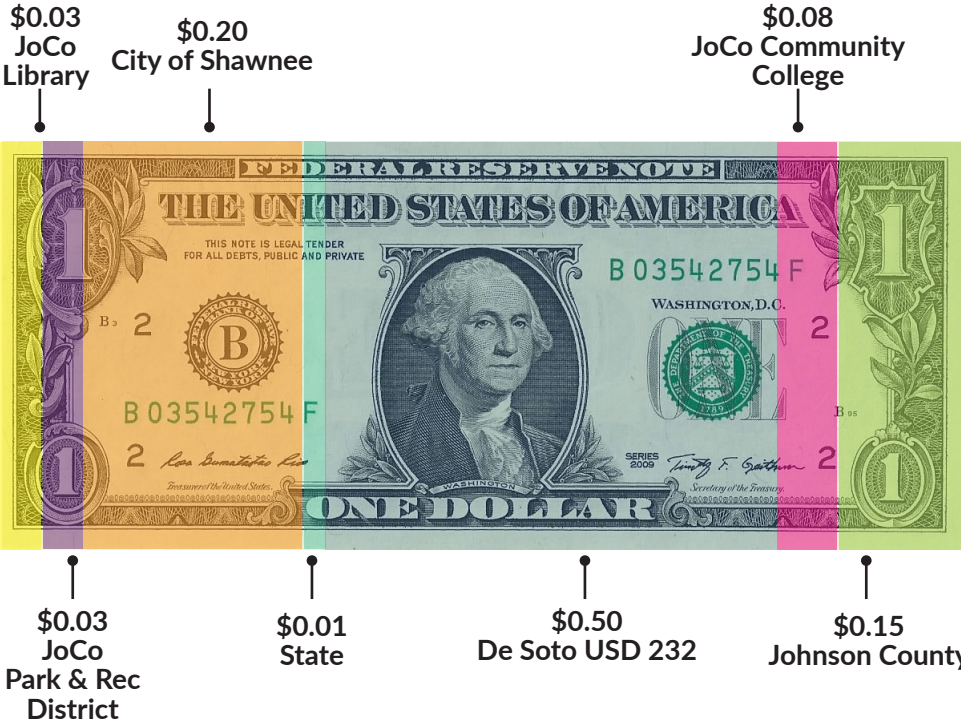
As a Shawnee resident, your property taxes support education, parks and recreation, libraries, as well as the county and state. For each dollar you pay in property taxes, the following entities receive a portion based on the individual mill levy for each.



Shawnee Mission USD 512 School District

SMSD USD 512	50.822	47%
City of Shawnee	23.048	21%
Johnson County	17.526	16%
JoCo Community College	8.131	8%
JoCo Library	3.812	4%
JoCo Park & Rec District	3.022	3%
State	1.5	1%
	<hr/>	
	107.86	100%

DOLLAR Distribution



De Soto USD 232 School District

DeSoto USD 232	61.042	51%
City of Shawnee	23.048	20%
Johnson County	17.526	15%
JoCo Community College	8.131	7%
JoCo Library	3.812	3%
JoCo Park & Rec District	3.022	3%
State	1.5	1%
	<hr/>	
	118.081	100%

Calculating Your City Property Taxes

In 2024, the City's property tax rate (mill levy) used to calculate property taxes will be approximately .023048. Below is the formula to calculate your property taxes.

$$\begin{aligned} &\text{Your Home's Market Value} \times 11.5\% = \text{Your Home's Assessed Value} \\ &\text{Assessed Value} \times \text{City's Mill Levy Rate (.023048)} = \\ &\quad \text{What you pay in City Property Taxes} \end{aligned}$$

Example:

$$\$382,700 \times 11.5\% = \$44,011$$

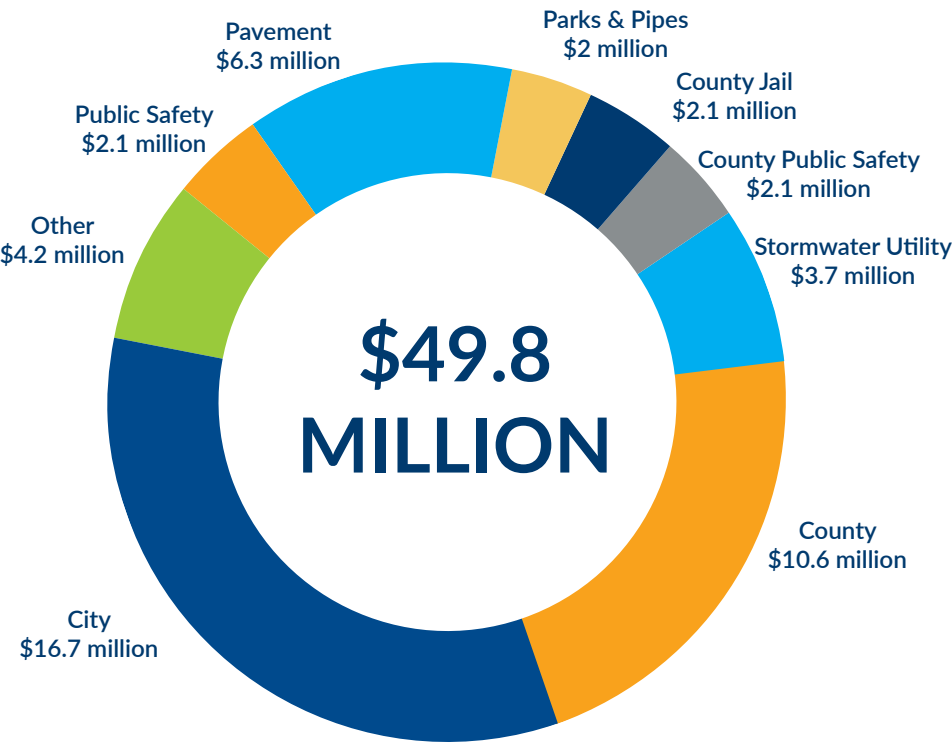
$$\$44,011 \times .023048 = \$1,014.37$$

The average value of a home in Shawnee is \$382,700. Therefore, the average City property tax (as shown on the tax bill) is \$1,014.37 per year or \$84.53 per month. Property Tax bills are available on the Johnson County Treasurer's website at taxbill.jocogov.org.



*According to the US Bureau of Labor Statistics, September 2021

Sales and Other Taxes Breakdown



Sales Tax

For every \$100 in purchases, residents and businesses pay \$9.60 in sales tax. Of this amount, the City receives \$1.63. The remaining \$7.97 goes to the State of Kansas and Johnson County.

Total Sales Tax Rate Within Shawnee	9.600%
State of Kansas	6.500%
Johnson County	1.475%
*City of Shawnee	1.000%
Shawnee Parks and Pipes	0.125%
Shawnee Public Safety	0.125%
Shawnee Pavement	0.375%

***Additional 1.0% at Shawnee Plaza Shopping Center for a Transportation Development District*
**Additional 1.5% at Westbrooke Green for a Community Improvement District*

Stormwater Utility Fee

Stormwater Utility Fee is used to manage the City’s Stormwater System that consists of more than 192 miles of pipe, nearly 10,000 inlets and junction boxes, 100 miles of roadside ditches, and 13 miles of improved channels. The 2024 fee is \$6 per month for each single-family dwelling. Non-residential properties pay a fee based on impervious surface area. For information about the City’s Stormwater Program visit cityofshawnee.org.



2024 BUDGET

The 2024 Budget Funds programs that support the Strategic Vision's Five Priority Pillars established by the Governing Body.



Attract diverse housing to meet the needs of a growing city



Create a safe, sustainable, inclusive, and interactive community



Design an environment where businesses thrive



Lead in maximizing and integrating natural resources



Provide exceptional city services and infrastructure

“Inspiring our community to create a shared vision for Shawnee’s future”



For a detailed line-item breakdown of each department and division budget, please visit cityofshawnee.org/budget



11110 Johnson Drive ■ Shawnee ■ KS ■ 66203
913.631.2500 ■ cityofshawnee@cityofshawnee.org